

COUNTRYSIDE AT



# TATTENHOE PARK

MILTON KEYNES



Computer generated image of The Aspen, plots 252 & 253

## THE ASPEN 3 bedroom, 2 storey house

Plots 2, 62, 63, 64, 66, 67, 69, 71, 72, 75, 76, 83, 84, 121, 122,  
127, 128, 229, 230, 246, 252, 253, 262, 263, 266 & 270

A charming three bedroom family house. Downstairs, large feature windows ensure the living space is flooded with natural light, while the open-plan kitchen/dining room is sure to become the heart of the home.



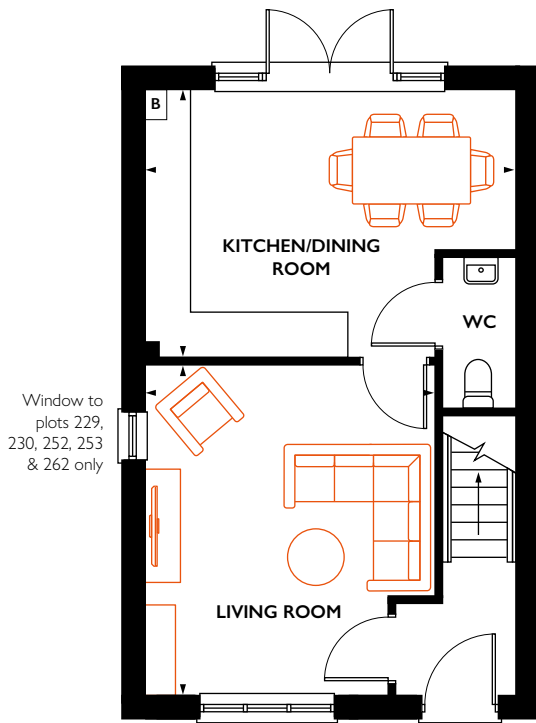
**COUNTRYSIDE**

Places People Love

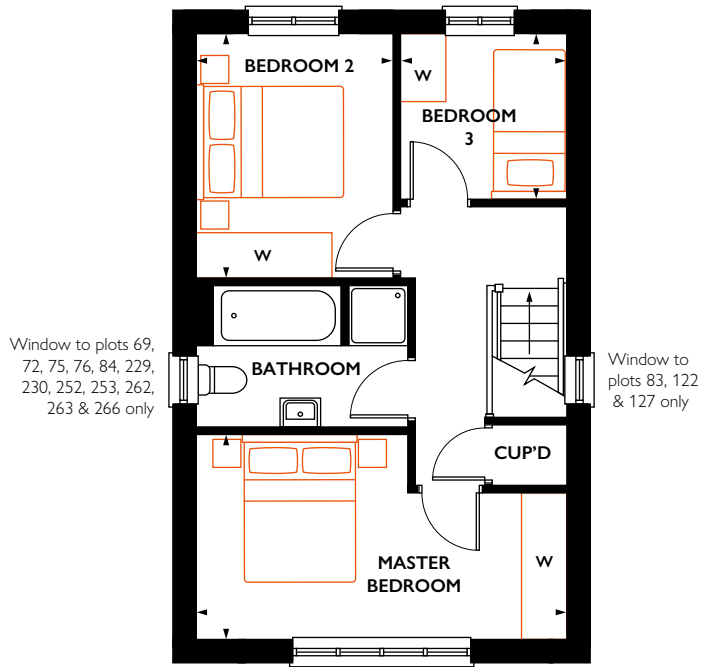


# THE ASPEN Total internal area 79 sq.m 855 sq.ft

Plots 2, 62, 63, 64, 66, 67, 69, 71\*, 72, 75\*, 76, 83\*, 84\*, 121\*, 122\*, 127, 128, 229, 230\*, 246, 252\*, 253, 262\*, 263, 266\* & 270\*



Ground floor



First floor

## Ground floor

**KITCHEN/DINING ROOM**  
4.89m x 3.51m    16' 1" x 11' 6"

**LIVING ROOM**  
4.41m x 3.83m    14' 6" x 12' 7"

## First floor

**MASTER BEDROOM**  
4.89m x 2.70m    16' 1" x 8' 11"

**BEDROOM 2**  
3.24m x 2.61m    10' 8" x 8' 7"

**BEDROOM 3**  
2.20m x 2.19m    7' 3" x 7' 2"

\* Handed plot    B = Boiler (location is indicative)    W = Space for a wardrobe

All room sizes are approximate with maximum dimensions which have been taken into the kitchen units and are not intended for carpet sizes or items of furniture. All dimensions and areas listed are to finished measurements. Countryside operates a policy of continuous product development and all room layouts may be subject to minor modifications. Kitchen, bathroom and furniture layouts shown are indicative only. Computer generated images are indicative only and can be subject to change. Images are often shown from an imaginary open space area and variations to the external design and landscaping may occur. Please ask Sales Consultants for detailed information regarding specific properties. January 2022.

