



## THE ELDER

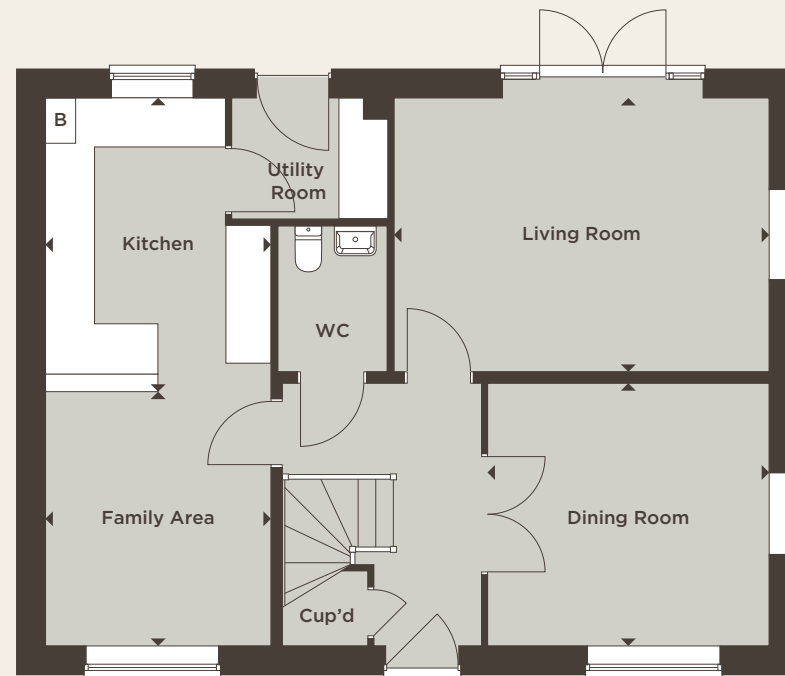


Four bedroom detached house

# THE ELDER

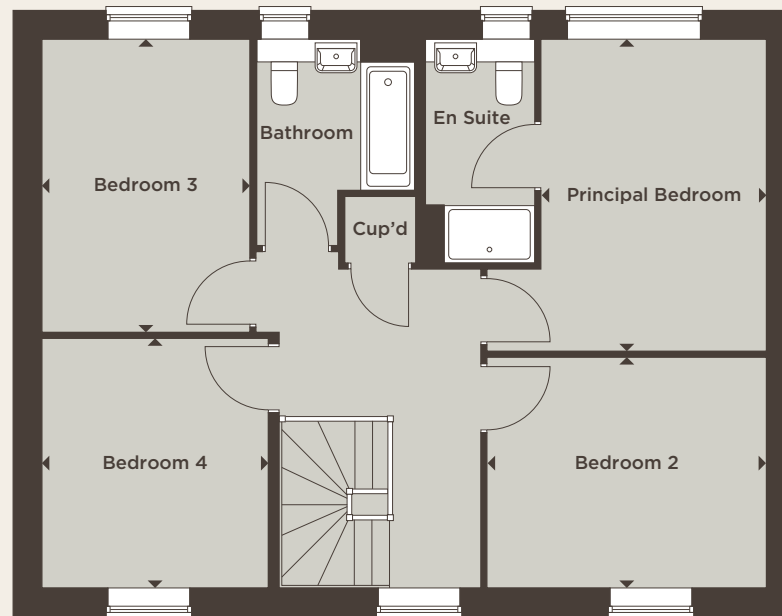
A traditional style home featuring a well-equipped kitchen with handy utility space, a family area plus a separate living room and dining room – making this the ideal family home. The first floor of this property offers an impressive principal bedroom with en suite, plus a further three generously sized bedrooms. This house also includes a garage.

**Total Internal Area** 139.00 sq m 1496 sq ft



## Ground Floor

|             |               |                |
|-------------|---------------|----------------|
| Kitchen     | 3.89m x 2.99m | 12'9" x 9'10"  |
| Family Area | 3.37m x 2.99m | 11'0" x 9'10"  |
| Living Room | 4.96m x 3.63m | 16'4" x 11'11" |
| Dining Room | 3.73m x 3.48m | 12'3" x 11'5"  |



### First Floor

|                            |                    |                   |
|----------------------------|--------------------|-------------------|
| Principal Bedroom          | 4.13m x 2.97m      | 13'6" x 9'9"      |
| Bedroom 2                  | 3.70m x 3.05m      | 12'2" x 10'0"     |
| Bedroom 3                  | 3.88m x 2.75m      | 12'9" x 9'0"      |
| Bedroom 4                  | 3.30m x 3.06m      | 10'10" x 10'0"    |
| <b>Total Internal Area</b> | <b>139.00 sq m</b> | <b>1496 sq ft</b> |



[WWW.STLUKESPARK.CO.UK](http://WWW.STLUKESPARK.CO.UK)



**COUNTRYSIDE**  
Places People Love

Computer generated image, architectural detailing, materials and landscaping may vary from the illustration.  
All sizes are approximate with maximum finished dimensions. CountrySide operates a policy of continuous product development and all room layouts may be subject to minor modifications. Kitchen and bathroom layouts and floor tiling shown are indicative. Radiator locations are not indicated. Please refer to development layout to review garage variations for each plot. Please note some plots are handed. Please speak to Sales Consultants for detailed information regarding specific properties.